

## Visual Story: Waterfront Theatre

A visual story helps people prepare for a new experience or decide if this space works for them.

This visual story was created using a template created by the PuSh Festival in collaboration with many partners and consultants.

They are happy to share it,  
email [access@pushfestival.ca](mailto:access@pushfestival.ca)



# Visual Story

## Waterfront Theatre

### Table of Contents

[Where is Waterfront Theatre?](#)

[Accessibility](#)

[Getting to Waterfront](#)

[Parking](#)

[Bus](#)

[50,](#) or [4,7,14, 84](#) or [10,16](#)

[Box Office / Buying Tickets](#)

[The Lobby](#)

[Staff & Volunteers](#)

[Drinks & Snacks](#)

[Going into the Theatre](#)

[Inside the Theatre](#)

[Washrooms](#)

[Questions?](#)

You can click on any  
of the links and go  
straight to that page.

# Where is Waterfront?

Waterfront is on Granville Island



This sign is the entrance to Granville Island

## Where is Waterfront?

Waterfront is beside  
Kids Market on  
Cartwright Street.

1412 Cartwright St,  
Vancouver, BC V6H 3R8

It is across the street from  
Granville Island Brewing.



The front entrance is here. Walk under the awning  
and use the doors next to number 1412.

[See detailed slides here](#)

## Accessibility

- Waterfront Theatre is wheelchair accessible, including the washrooms
- Wheelchair users sit in the front row
- There are no automatic buttons to open any of the doors
- The box office counters are low enough for wheelchair users
- Except for the front row, you need to use stairs to get to your seat
- There are railings for support

# Getting to Waterfront

Coming by Car

[View map](#) of Parking

## Driving/Parking

- Pay parking in effect 11AM - 6PM
  - Monday - Friday: \$3/hour
  - Weekends & holidays: \$4/hour
- Parking is free before 11AM & after 6PM
- There is one accessible spot in front of building, and one in the lot next to it
- There are free stalls throughout Granville Island with posted time limits until 7PM, no time limit after 7PM



The closest parking is on the street in front of building, or in a lot to the left of the building.

## Coming by Car



There is passenger drop off across the street.

# Coming by Bus

[View routes on Google maps](#)

These buses take you close to Granville Island:

## Route 50

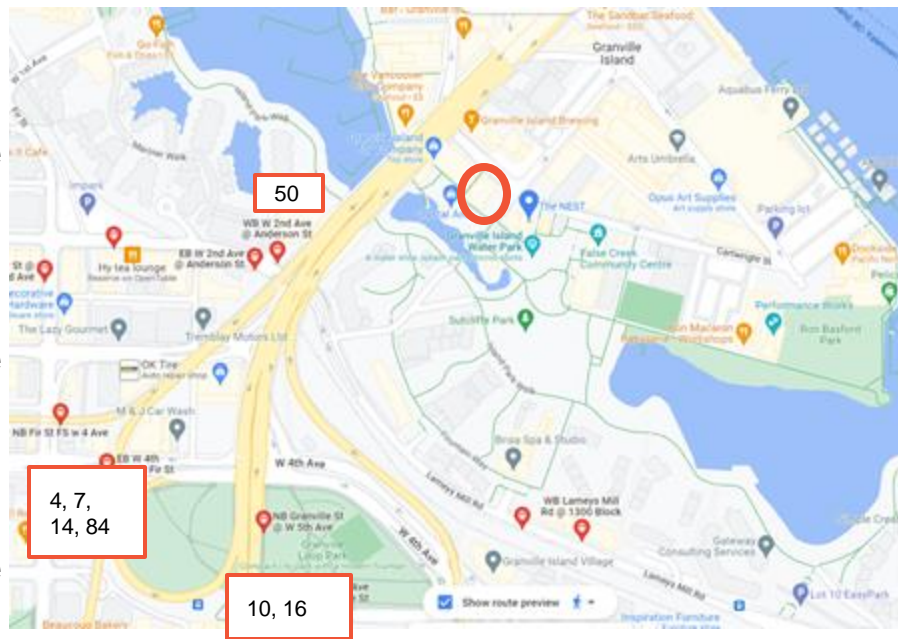
- For directions with pictures to get to the theatre from the 50 bus, see [page 8](#).

## Routes 4, 7, 14, 84

- For directions with pictures to get to the theatre from the 4, 7, 14, and 84 buses, see [page 11](#).

## Routes 10 and 16

- For directions with pictures to get to the theatre from the 10 and 16 buses, see [page 16](#).



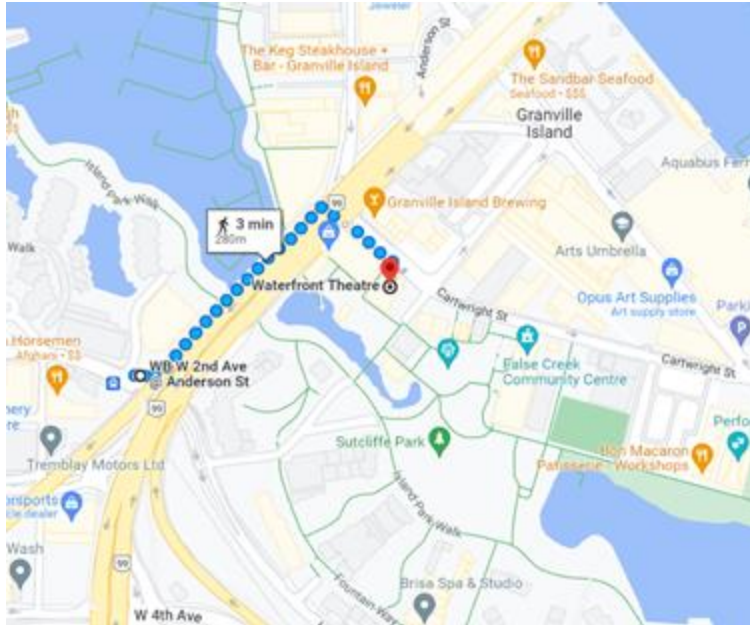
Here is a picture of the closest bus stops.



## When Walking from the 50 Bus Stop

[View map on Google maps](#)

Note: Google maps may provide a different route



Here is a map from the 50 bus stops to the theatre.



This is what the 50 Eastbound bus stop looks like.

## When Walking from the 50 Bus Stop



Walk towards the Granville bridge above you.  
Cross Anderson Street at the lights.



After crossing Anderson Street, turn left and  
cross Lamey's Mill Road and continue walking  
under the bridge along Anderson Street.  
[Skip to slide 24 for the rest of the directions.](#)

## When Walking from the 50 Bus Stop



This is what the 50 Westbound bus stop looks like. Walk towards the bridge above you and cross Anderson Street at the lights.



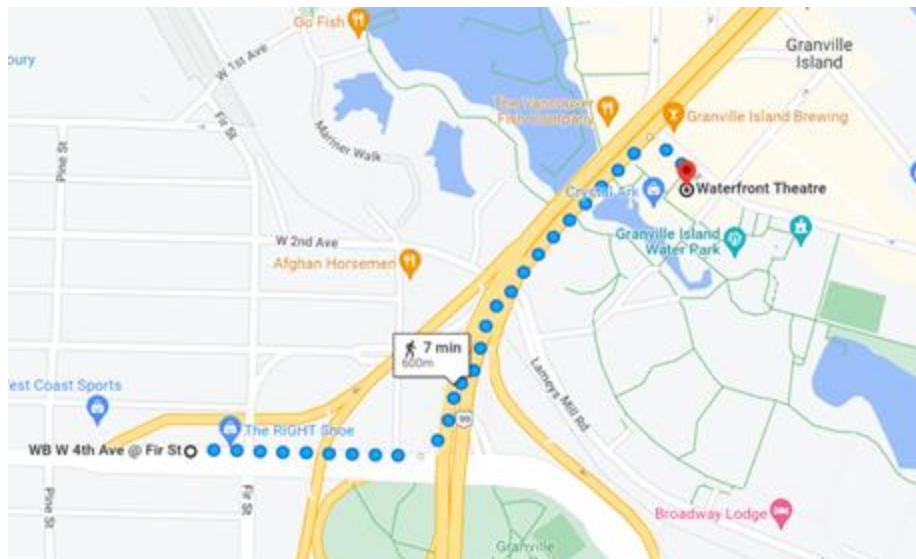
Turn left as soon as you cross the street and continue to walk along Anderson Street underneath the bridge.

[Skip to slide 24 for remainder of route.](#)

When Walking from the 4, 7, 14, and 84 Bus Stop

[View map on Google maps](#)

Note: Google maps may provide a different route



Here is a map from the 4, 7, 14, and 84 bus stops to the theatre.

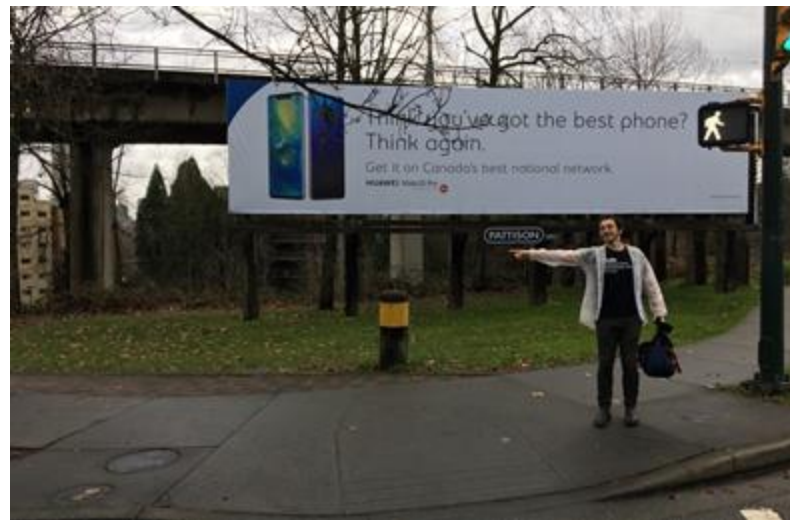


This is what the 4, 7, 14, and 84 Westbound bus stop looks like.

## When Walking from the 4, 7, 14, and 84 Bus Stop



Turn right when you get off the bus and head along West 4th Ave towards the Granville Bridge above you.



Cross Anderson Street at the lights and turn left.

[Skip to slide 24 for remainder of route.](#)

## When Walking from the 4, 7, 14, and 84 Bus Stop



This is what the 4, 7, and 84 Eastbound bus stop looks like.



Walk away from the Granville Bridge towards Fir Street.

## When Walking from the 4, 7, 14, and 84 Bus Stop

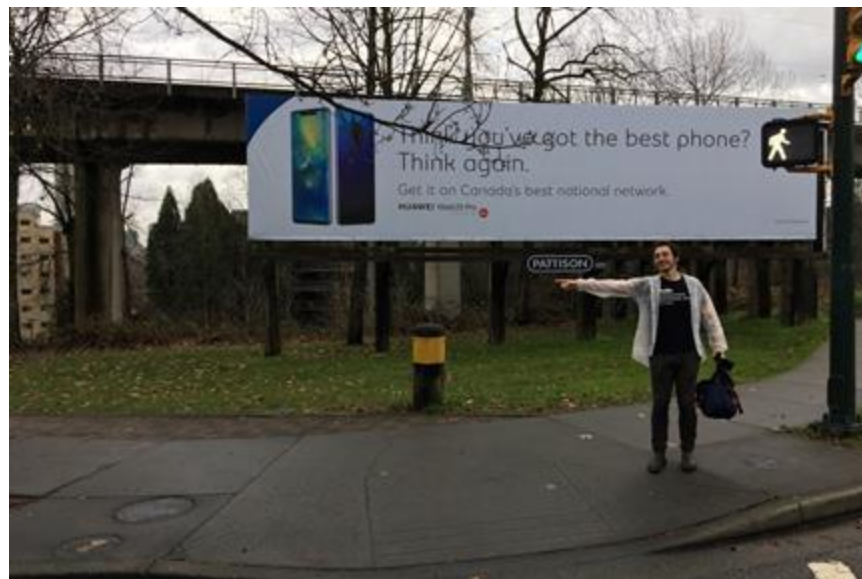


Turn right at Fir Street and cross West 4th Avenue at the lights.



Once you cross the street, turn right and walk along 4th Avenue towards the Granville Bridge above you.

## When Walking from the 4, 7, 14, and 84 Bus Stop



Keep going along west 4th Ave until you  
cross Anderson Street under the bridge.  
Turn left down the path.

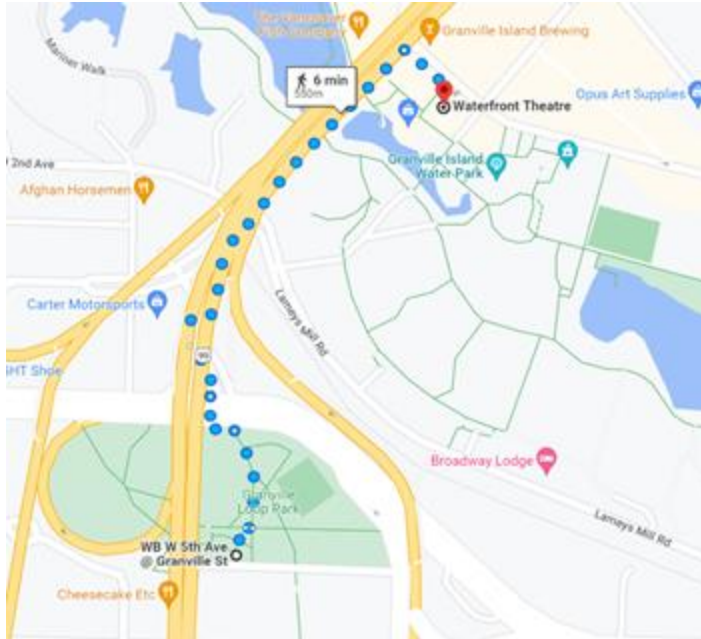
[Skip to slide 24 for remainder of route.](#)



## When Walking from the 10 and 16 Bus Stop

[View map on Google maps](#)

Note: Google maps may provide a different route



Here is a map from the 10 and 16 bus stop to the theatre.



This is what the 10 and 16 Southbound bus stop looks like.

## When Walking from the 10 and 16 Bus Stop

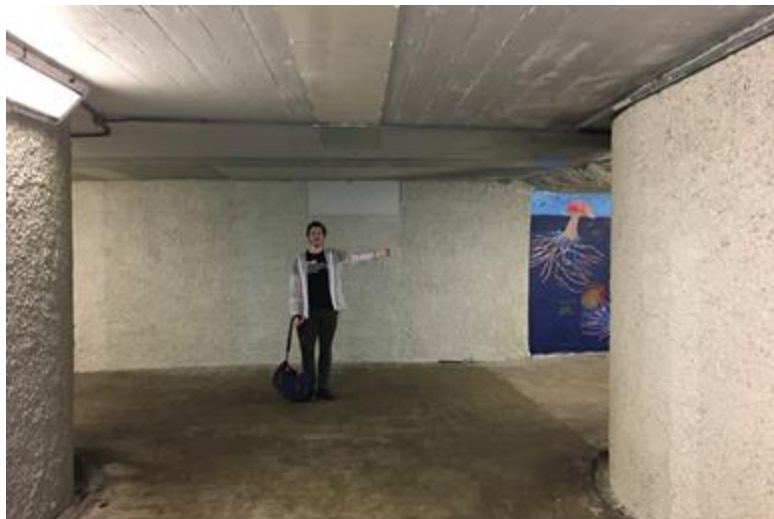


Walk away from the Granville Street,  
down the path towards the park.



After a few feet turn right,  
into the underground walkway.

## When Walking from the 10 and 16 Bus Stop



After a short while, you will come to a T intersection. Turn right.



Just after you come out of the tunnel, and before the stairs, turn left.

## When Walking from the 10 and 16 Bus Stop



Go up those stairs and turn right.



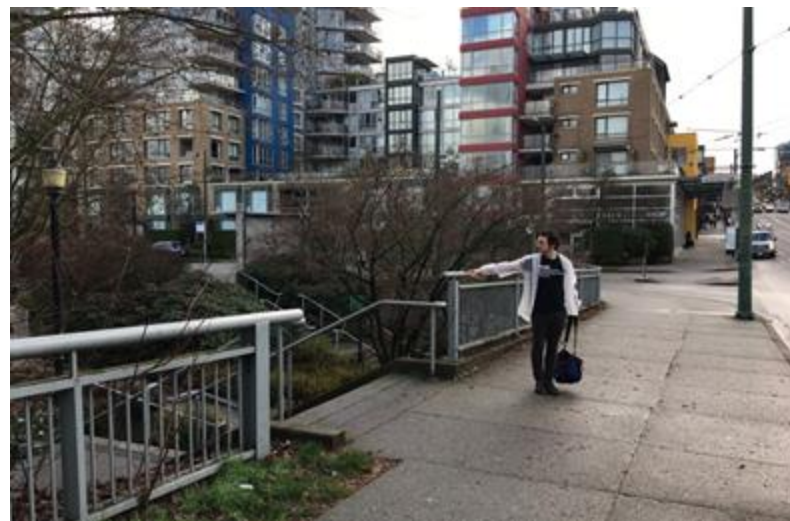
Right away, turn left down  
the first path in the park.

[Skip to slide 22 for the remaining instructions.](#)

## When Walking from the 10 and 16 Bus Stop



This is what the 10 and 16 Northbound bus stop looks like. Walk back along Granville Street, away from the bridge.



After a few feet, turn left and go down the stairs towards the park.

## When Walking from the 10 and 16 Bus Stop



Right away, turn left down the first path in the park.



Both routes continue together from here on.

Keep going down the path through the park until you reach West 4th Avenue.

## When Walking from the 10 and 16 Bus Stop

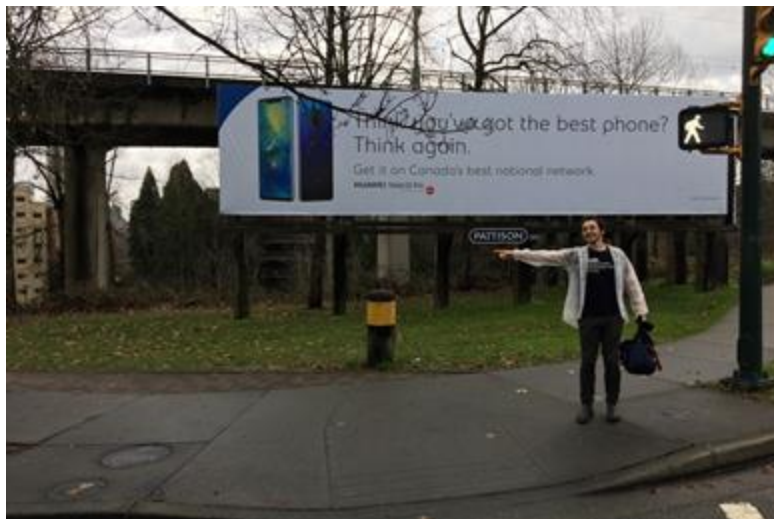


Cross West 4th Avenue at the lights.



At the other side, immediately turn right and cross Anderson Street.

## All routes combine here



As soon as you're across the street,  
turn left and go down the path.



Keep following the brick path, which follows the  
path of the bridge above you.  
This will take you all the way onto Granville Island.



# Walking to Waterfront from Granville Island entrance



You will see the big GRANVILLE ISLAND sign. Keep going straight, across the bridge.

## Walking to Waterfront from Granville Island entrance



Turn right onto Cartwright Street after the yellow building. This is the Kids Market.



Follow the orange arrow.

## Walking to Waterfront from Granville Island entrance



Waterfront is here

Keep walking straight along Cartwright Street.  
There isn't always a sidewalk so be careful.

## Walking to Waterfront from Granville Island entrance

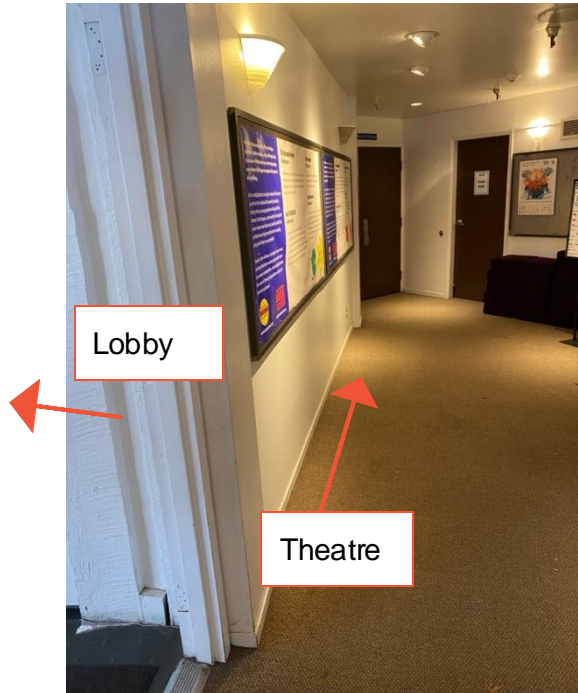


Waterfront will be on the right-hand side of Cartwright Street.

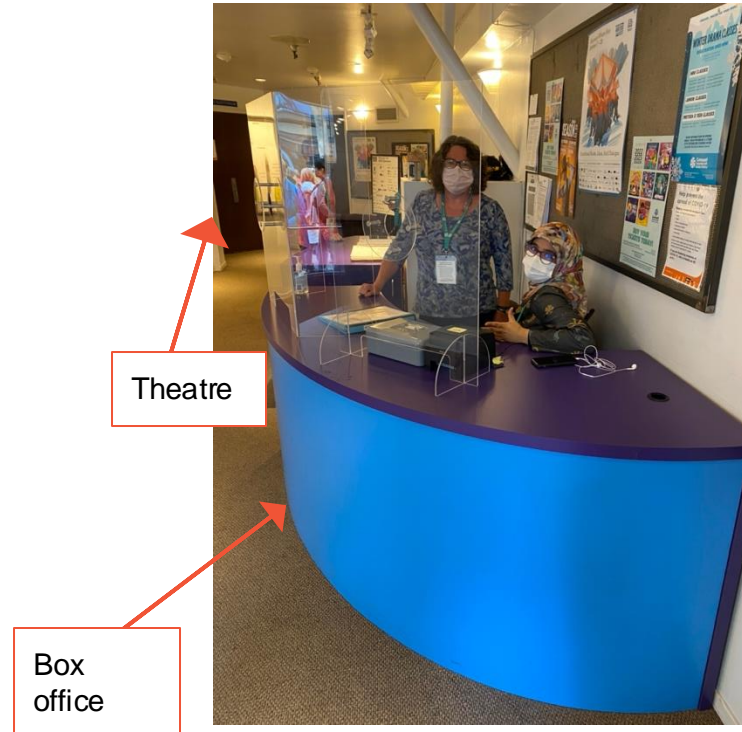


Enter through the double doors under the awning.  
This is the main entrance.  
The doors on the left are usually not open.

## Inside the Building



The lobby is to the left.  
The box office is to the right.  
The theatre is straight ahead.



Some shows may have decorations in the venue.

# Box Office / Buying Tickets



This is the Box Office, where you can pick up or purchase your tickets.

It might have special decorations for the performance.

## The Lobby

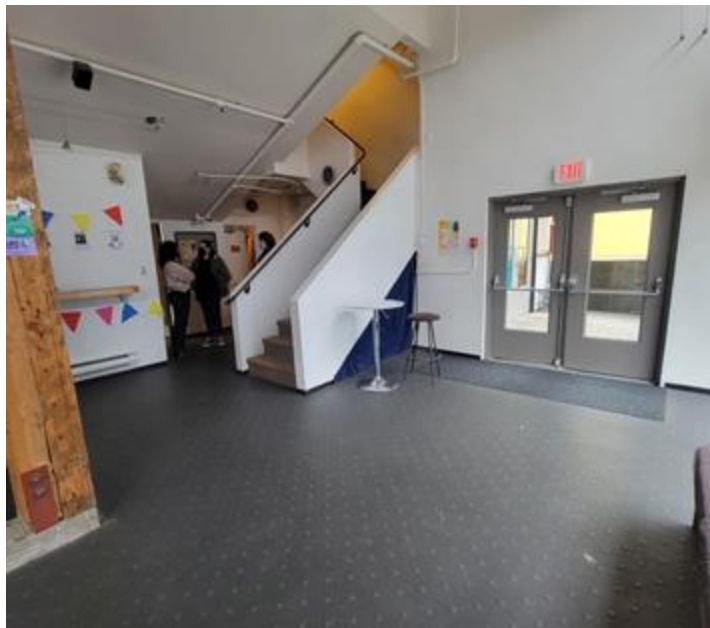


This is what the lobby looks like when you enter it.



Sometimes authors will sign their books in the lobby after an event.

## The Lobby



If you arrive late, staff or volunteers may ask you to enter the theatre via these stairs.



This is what it looks like when you stand next to the concession stand.



## Staff & Volunteers

Our staff & volunteers all wear badges with their name on them.  
Staff wear red badges and volunteers wear yellow badges.



If you need help,  
ask them!

While you wait in line, they will ask you if you need a chair to sit on  
or if you need extra time to get settled in the theatre.

## Drinks & Snacks

This is the bar /concession where sometimes snacks and drinks are sold.  
It is in the lobby.



Items are different for each show.  
You can pay with card or cash.



When you enter the lobby, the bar  
will be at the back, to the right.

## Going into the Theatre



The theatre is through the double brown doors.  
There will be an usher who will take or scan your ticket.

## Inside the Theatre

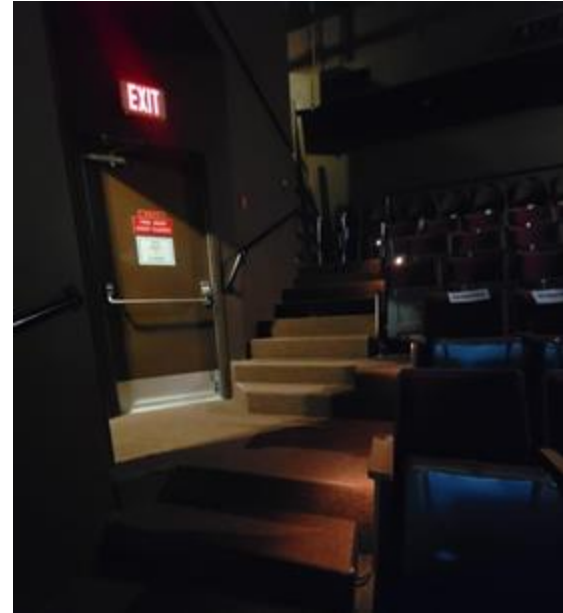


This is what it looks like to sit in the audience.  
For each show, the stage will look different.



This is what it looks like for the people on the stage.

## Inside the Theatre



There is an exit on row K (15 steps), that will be open during the performance

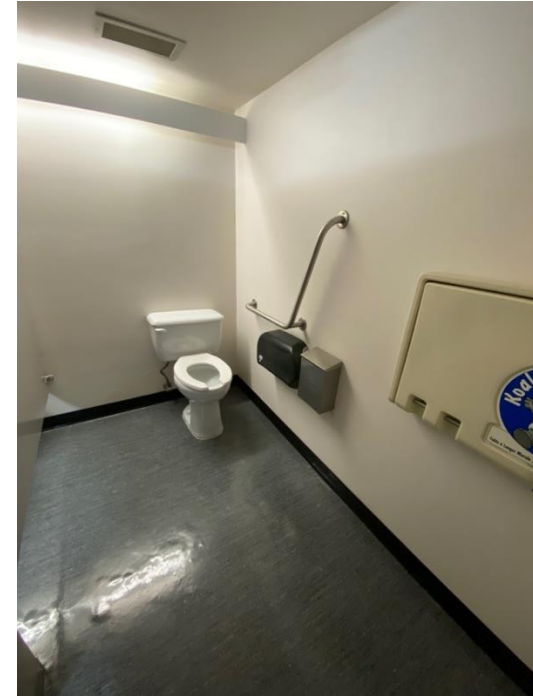
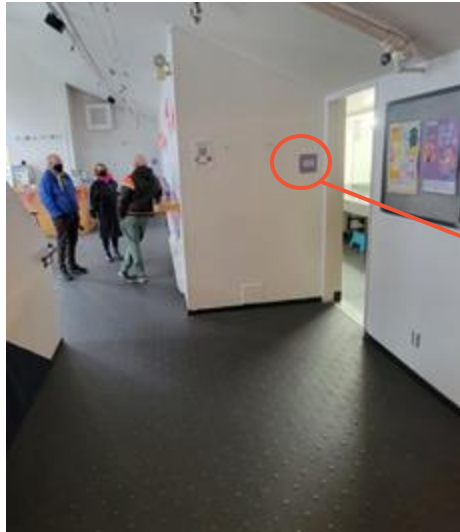
# Washrooms

There are two gender neutral washrooms. Both are accessible.



[Detailed information in accessibility audit](#)

## Washrooms



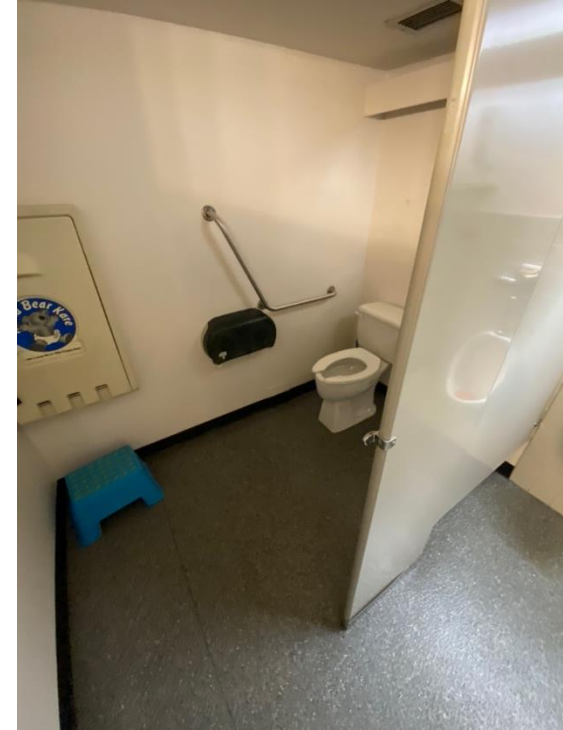
This is the washroom closest to the theatre entrance and the box office.

The accessible stall is at the end. There is a change table inside.

## Washrooms



This is the washroom closest to the concession/bar. It has one stall and urinals.



The single stall is accessible. There is a change table inside.



## Questions?

If you have any questions, please contact:  
[access@writersfest.bc.ca](mailto:access@writersfest.bc.ca)

If you would like to reserve an  
accessible seat or book a  
reduced-price ticket, please contact:  
[boxoffice@writersfest.bc.ca](mailto:boxoffice@writersfest.bc.ca)