

Visual Story: The Nest

A visual story helps people prepare for a new experience or decide if this space works for them.

This visual story was created using a template created by the PuSh Festival in collaboration with many partners and consultants.

They are happy to share it, email access@pushfestival.ca

Visual Story

The Nest

Table of Contents

[Where is The Nest?](#)

[Accessibility](#)

[Getting to The Nest](#)

[Parking](#)

[Bus](#)

[50](#), or [4,7,14, 84](#) or [10,16](#)

[The Lobby](#)

[Box Office / Buying Tickets](#)

[Staff & Volunteers](#)

[Going into the Theatre](#)

[Inside the Theatre](#)

[Washrooms](#)

[Questions?](#)

You can click on any
of the links and go
straight to that page.

Where is The Nest?

The Nest is on Granville Island



This sign is the
entrance to
Granville Island

Where is The Nest?

The Nest is on the third floor of Festival House.

1398 Cartwright St 3rd floor
 Vancouver, BC V6H 3R8

Stairs and elevator available for
 3rd floor access

See [slide 29](#) for detailed images



Accessibility

- The Nest is wheelchair accessible via elevator
- Wheelchair users sit in the front row
- All seats except the front row require taking stairs, and there is no railing for support
- There are no automatic buttons to open any of the doors
- Both washrooms are accessible, however, the women's washrooms are harder to reach because of the baby change table. It can be moved if you ask.

Getting to the Nest

Coming by Car

[View map of Parking](#)

Driving/Parking

- Pay parking in effect 11AM - 6PM
 - Monday - Friday: \$3/hour
 - Weekends & holidays: \$4/hour
- Parking is free before 11AM & after 6PM
- Accessible parking is available right in front of the building, to the left and right of the front door.
- There are free stalls throughout Granville Island with posted time limits until 7PM, no time limit after 7PM



[Skip to Pictures of the Venue](#)

Getting to The Nest

Coming by Bus

[View routes on Google maps](#)

These buses take you close to Granville Island:

Route 50

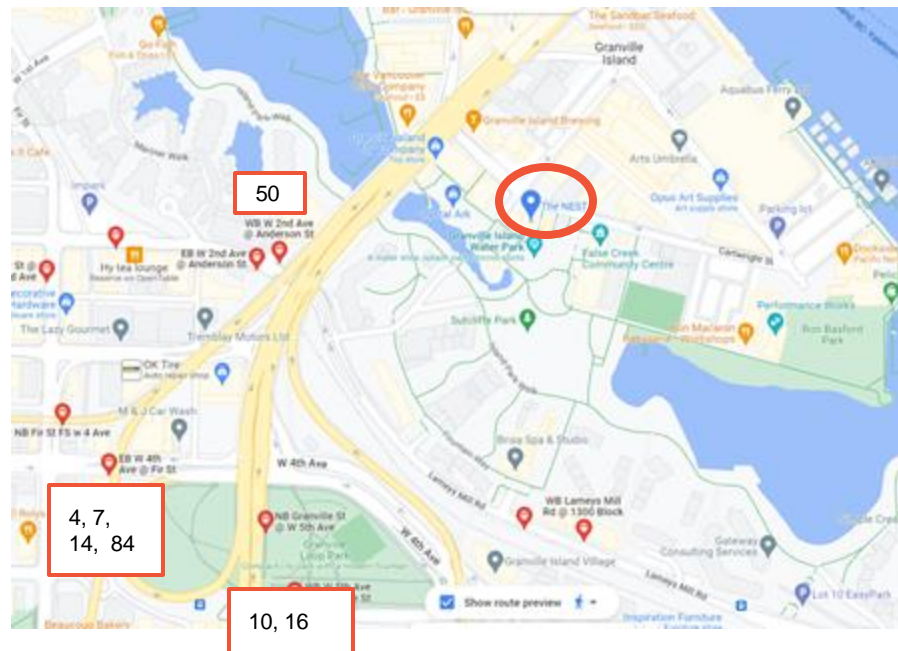
- For directions with pictures to get to the theatre from the 50 bus, see [page 7](#).

Routes 4, 7, 14, 84

- For directions with pictures to get to the theatre from the 4, 7, 14, and and 84 bus, see [page 10](#)

Routes 10 and 16

- For directions with pictures to get to the theatre from the 10 and 16 bus, see [page 15](#)



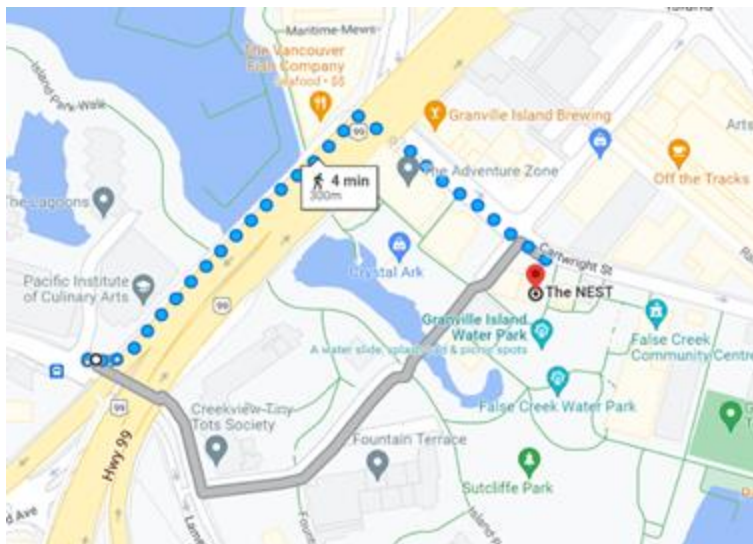
Here is a picture of the closest bus stops.

[Skip to Pictures of the Venue](#)

When Walking from the 50 Bus Stop

[View map on Google maps](#)

Note: Google maps may provide a different route



Here is a map from the 50 bus stops to the theatre.



This is what the 50 Eastbound bus stop looks like.

When Walking from the 50 Bus Stop

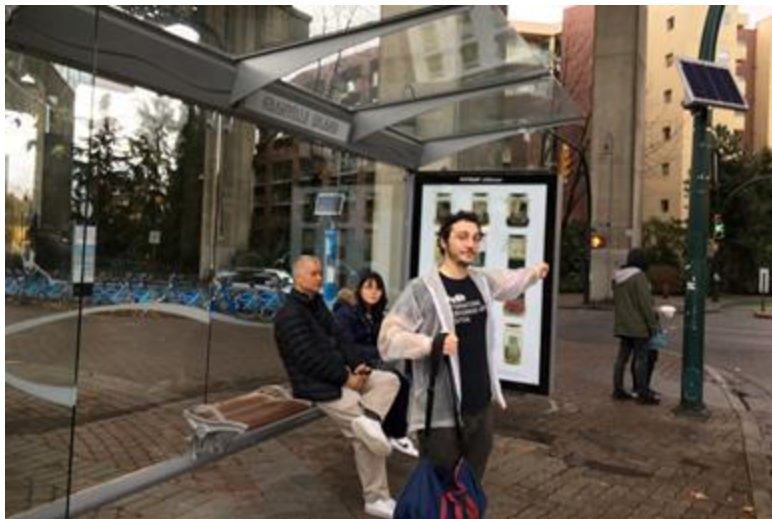


Walk towards the Granville bridge above you.
Cross Anderson Street at the lights.



After crossing Anderson Street, turn left and
cross Lamey's Mill Road and continue walking
under the bridge along Anderson Street.
[Skip to slide 23 for rest of directions.](#)

When Walking from the 50 Bus Stop



This is what the 50 Westbound bus stop looks like.
Walk towards the bridge above you and cross
Anderson Street at the lights.



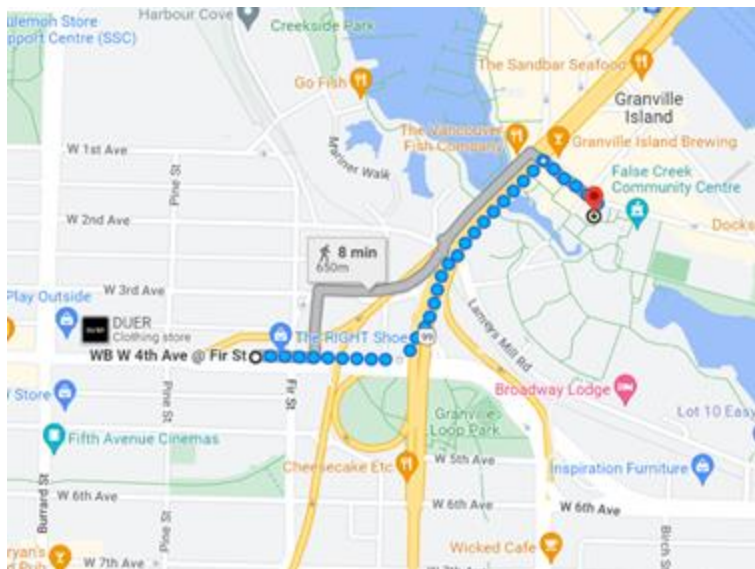
Turn left as soon as you cross the street and
continue to walk along Anderson Street
underneath the bridge.

[Skip to slide 23 for remainder of route.](#)

When Walking from the 4, 7, 14, and 84 Bus Stop

[View map on Google maps](#)

Note: Google maps may provide a different route



Here is a map from the 4, 7, 14, and 84 bus stops to the theatre.

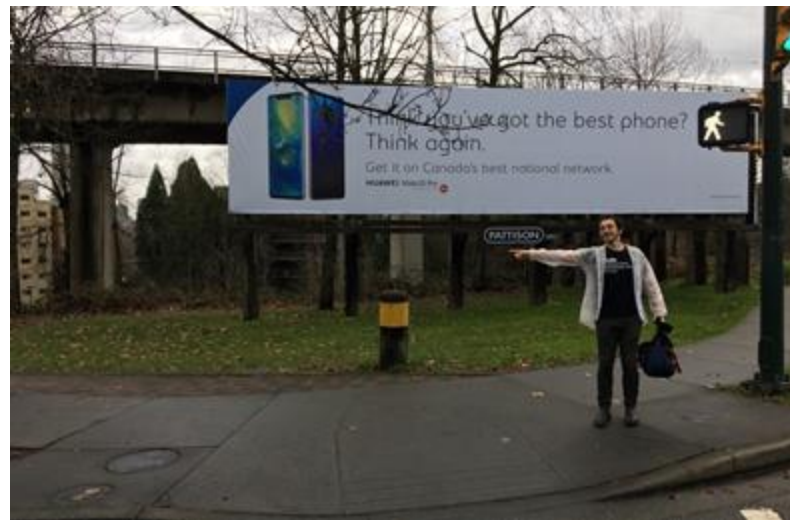


This is what the 4, 7, 14, and 84 Westbound bus stop looks like.

When Walking from the 4, 7, 14, and 84 Bus Stop



Turn right when you get off the bus and head along West 4th Ave towards the Granville Bridge above you.



Cross Anderson Street at the lights and turn left.

[Skip to slide 23 for remainder of route.](#)

When Walking from the 4, 7, 14, and 84 Bus Stop



This is what the 4, 7, 14, and 84 Eastbound bus stop looks like.



Walk away from the Granville bridge towards Fir Street.

When Walking from the 4, 7, 14, and 84 Bus Stop



Turn right at Fir Street and cross
West 4th Avenue at the lights.



Once you cross the street, turn right and walk
along 4th Avenue towards
Granville Bridge above you.

When Walking from the 4, 7, 14, and 84 Bus Stop



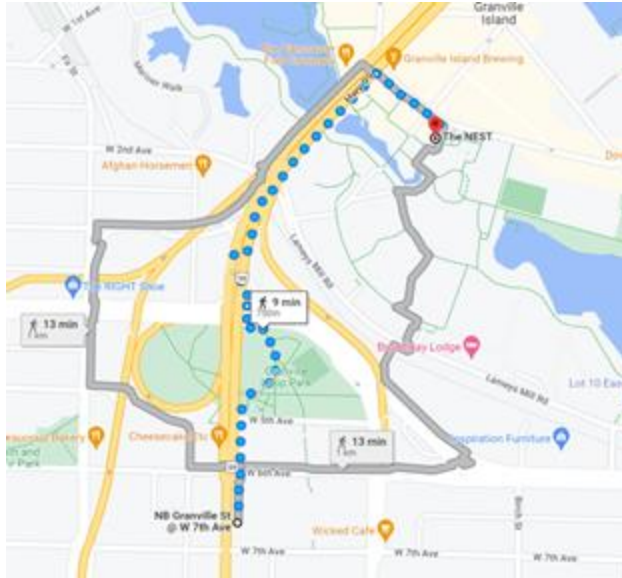
Keep going along west 4th Ave until you
cross Anderson Street under the bridge.
Turn left down the path.

[Skip to slide 22 for remainder of route.](#)

When Walking from the 10 and 16 Bus Stop

[View map on Google maps](#)

Note: Google maps may provide a different route



Here is a map from the 10 and 16 bus stop to the theatre.

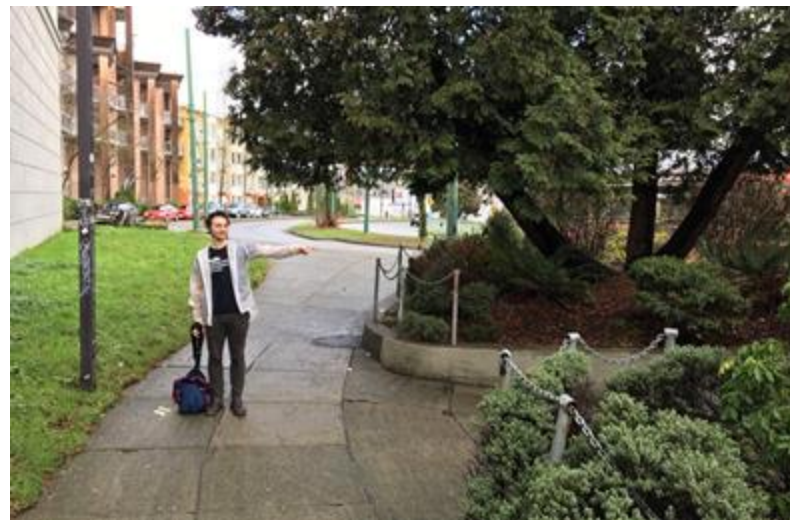


This is what the 10 and 16 Southbound bus stop looks like.

When Walking from the 10 and 16 Bus Stop

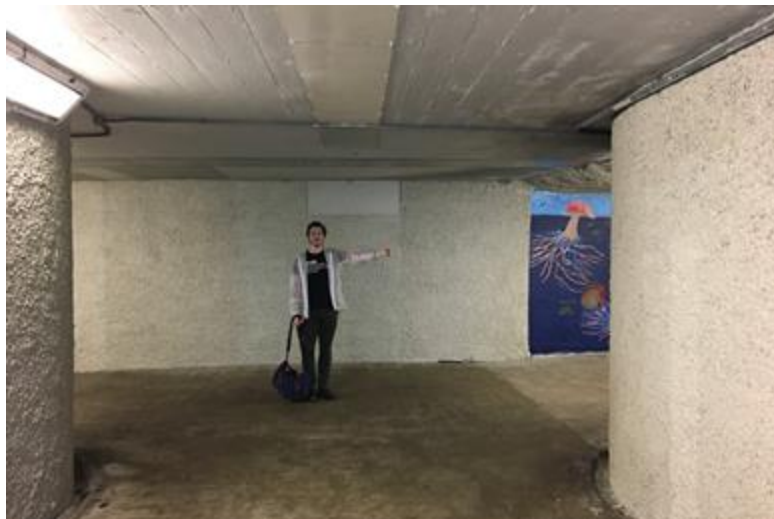


Walk away from the Granville Street,
down the path towards the park.



After a few feet turn right,
into the underground walkway.

When Walking from the 10 and 16 Bus Stop



After a short while, you will come to a T intersection. Go right.



Just after you come out of the tunnel, and before the stairs, turn left.

When Walking from the 10 and 16 Bus Stop



Go up those stairs and turn right.



Right away, turn left down
the first path in the park.

[Skip to slide 20 for the remaining instructions.](#)

When Walking from the 10 and 16 Bus Stop



This is what the 10, 14, and 16 Northbound bus stop looks like. Walk back along Granville Street, away from the bridge.



After a few feet, turn left and go down the stairs towards the park.

When Walking from the 10 and 16 Bus Stop



Right away, turn left down the first path in the park.



Both routes continue together from here on.

Keep going down the path through the park until you reach West 4th Avenue.

When Walking from the 10 and 16 Bus Stop

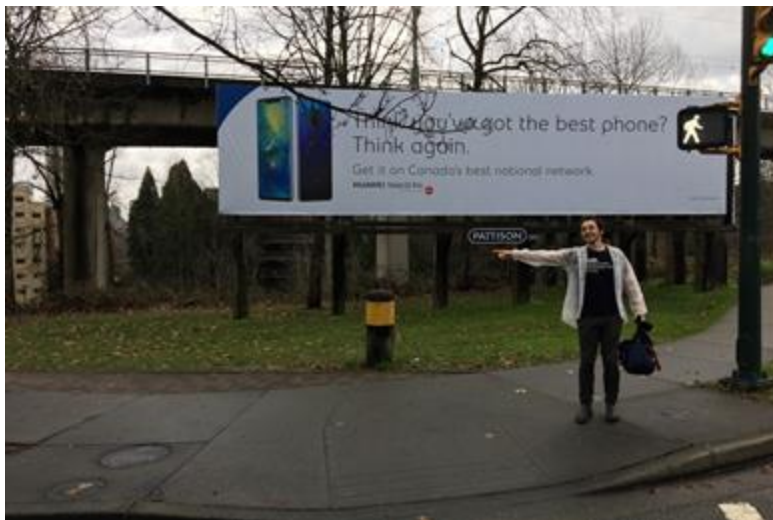


Cross West 4th Avenue at the lights.



At the other side, immediately turn right and cross Anderson Street.

All routes combine here



As soon as you're across the street,
turn left and go down the path.



Keep following the brick path, which follows the
path of the bridge above you.
This will take you all the way onto Granville Island.

Walking to The Nest from Granville Island entrance



You will see the big GRANVILLE ISLAND sign. Keep going straight, across the bridge.

Walking to The Nest from Granville Island entrance



Turn right onto Cartwright Street after the yellow building. This is the Kids Market.



Keep walking down Cartwright St.

Walking to The Nest from Granville Island entrance



Keep walking straight along Cartwright Street.
There isn't always a sidewalk so be careful.



Keep going straight!

Walking to The Nest from Granville Island entrance



Look for this parking sign as a landmark.



Festival House will be on your right
(across the street).

The Nest is inside Festival House Building



Look for this parking sign.
Festival House is across the street.



Enter through the glass doors under the awning.
There is no automatic door button.

Entering the Building



This is the main entrance to the building.
The Nest is on the third floor.



A box office volunteer will greet you
in the main entrance.
You can purchase tickets here.

Going up to the Nest:

Stairs



Once inside, a staircase will be to your left.
Take the stairs to the third floor.
Follow the signs for The Nest.

Elevator



Once inside, go through the double blue
doors for elevator access.
The elevator is to the left.

Stair Access



The stairs are texturized to be anti-slip.
The handrail is texturized at the
beginning, and follows the stairs
the entire way up.

Stair Access



This is the sign posted at the first landing.



Continue up the steps to the 3rd floor.
This is the entrance to The Nest

Elevator Access:



Once inside the building, go through the double blue doors.



The elevator is to the left.
Take it to The Nest, on the 3rd floor.

The Lobby

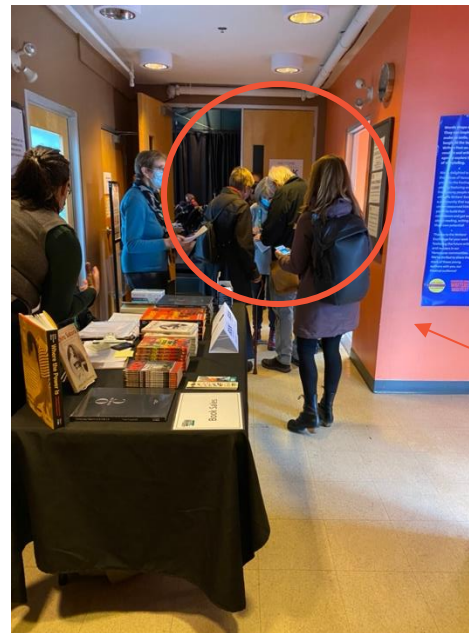
Going inside the Nest

This is what the lobby looks like exiting the stairs.



The venue is around the red wall,
through the wooden double doors

This is what the lobby looks like exiting the elevator.



Stairs are
around this
corner

The venue is through the wooden double doors

The Lobby



Here is a picture of the lobby.



Here is the lobby exiting the theatre.

Box Office / Buying Tickets



A box office volunteer will greet you in the main entrance on the main floor.
You can purchase tickets here.

Staff & Volunteers

Our staff & volunteers all wear badges with their name on them.
Staff wear red badges and volunteers wear yellow badges.



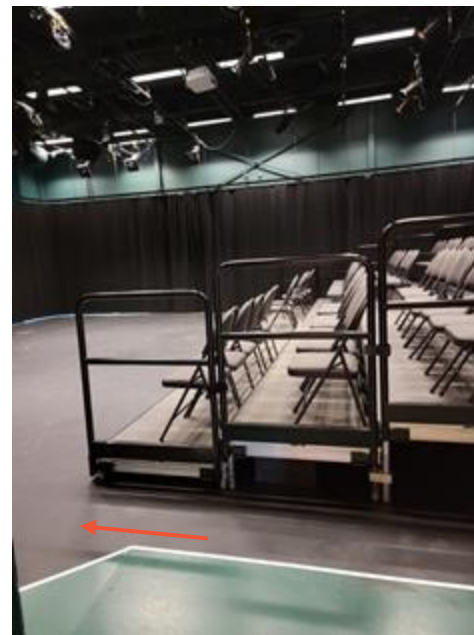
If you need help,
ask them!

While you wait in line, they will ask you if you need a chair to sit on
or if you need extra time to get settled in the theatre.

Going into the Theatre



To enter from the lobby you need to go through the double wooden doors.
The entrance is wheelchair accessible.



Once inside the doors, you will turn left to access seating

Inside the Theatre



This is what it looks like when you sit in the audience, the stage will look different for every show.



This is what it looks like for the people on the stage.

Washrooms

There are two washrooms. Both are accessible.



The washrooms have gender markers, but please use whichever you feel most comfortable in.



This is a picture of the accessible washroom to the side of the elevator.

A second washroom is down the hall, around the corner.

[Detailed information in accessibility audit](#)

Washrooms



Each washroom has two stalls.
One stall is wheelchair
accessible with a grab bar.



Washrooms



Each washroom has one accessible stall. The signs on the washroom doors will indicate which washroom has a urinal.



Questions?

If you have any questions, please contact:
access@writersfest.bc.ca

If you would like to reserve an
accessible seat or book a
reduced-price ticket, please contact:
boxoffice@writersfest.bc.ca