



## Visual Story: Revue Stage

A visual story helps people prepare for a new experience or decide if this space works for them.

This visual story was created using a template created by the PuSh Festival in collaboration with many partners and consultants.

They are happy to share it,  
email [access@pushfestival.ca](mailto:access@pushfestival.ca)

# Visual Story

## Revue Stage

### Table of Contents

You can click on any of the links and go straight to that page.

[Where is the Revue Stage?](#)

[Accessibility](#)

[Getting to Revue](#)

[Parking](#)

[Bus](#)

[50](#), or [4,7, 14, 84](#) or [10,16](#)

[The Lobby/Box Office / Buying Tickets](#)

[Staff & Volunteers](#)

[Drinks & Snacks](#)

[Going into the Theatre](#)

[Inside the Theatre](#)

[Washrooms](#)

[Questions?](#)

# Where is the Revue Stage?

Revue is on Granville Island



This sign is the entrance to Granville Island.

## Where is the Revue Stage?

Revue is at the back of  
Granville Island Public  
Market on Johnston Street.

1601 Johnston St,  
Vancouver, BC V6H 3R7



The front entrance is here. Go down the pathway between  
the market and Granville Island stage to reach it.

[See detailed slides here.](#)

## Accessibility

For wheelchair users:

- The washroom has 2 accessible stalls
- Wheelchairs users can only sit in the front row

Except for the front row, you need to use stairs to get to your seat, there is no railing for support.

There are no automatic buttons to open any of the doors.

# Getting to Revue

## Coming by Car

### Driving/Parking

[View map](#) of parking

- Pay parking in effect 11AM - 6PM
  - Monday - Friday: \$3/hour
  - Weekends & holidays: \$4/hour
- Free parking in effect before 11AM & after 6PM
- Accessible parking
- There are free stalls throughout Granville Island with posted time limits until 7PM, no time limit after 7PM



The closest parking on the street is in front of the Granville Island Arts Club. There are **4 accessible spots** in this lot.

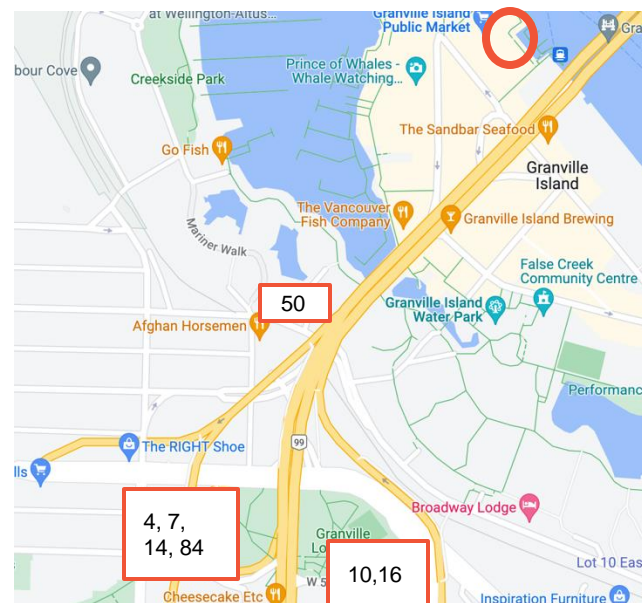
[Skip to Pictures of the Venue](#)

# Coming by Bus

[View routes on Google maps](#)

These buses take you close to Granville Island:

- Route 50
  - For directions with pictures to get to the theatre from the 50 bus, see [page 10](#).
- Routes 4, 7, 14, 84
  - For directions with pictures to get to the theatre from the 4, 7, 14, and 84 bus, see [page 13](#)
- Routes 10 and 16
  - For directions with pictures to get to the theatre from the 10 and 16 bus, see [page 18](#)

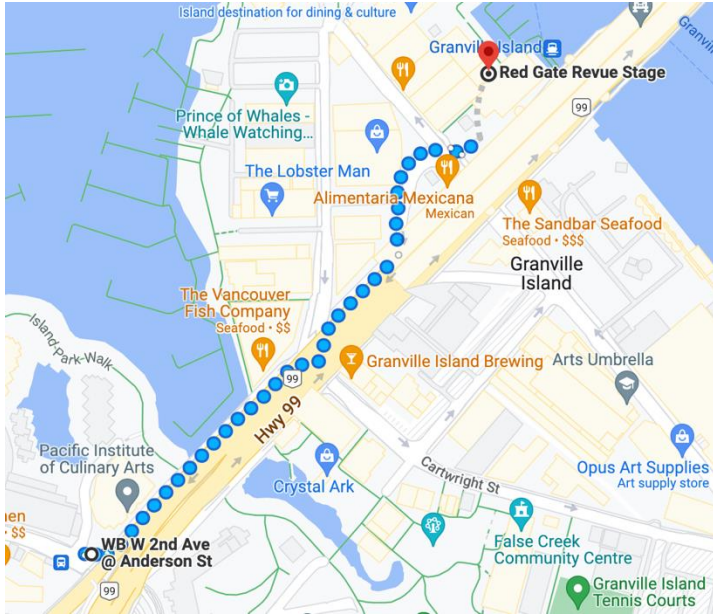


This is where the bus stops are.

## When Walking from the 50 Bus Stop

[View map on Google maps](#)

Note: Google maps may provide a different route



Here is a map from the 50 Bus stops to the theatre.

This is what the 50 Eastbound bus stop looks like.



## When Walking from the 50 Bus Stop



Walk towards the Granville bridge above you.  
Cross Anderson Street at the lights.



After crossing Anderson Street, turn left and  
cross Lamey's Mill Road and continue walking  
under the bridge along Anderson Street.

[Skip to slide 23 for rest of directions.](#)

## When Walking from the 50 Bus Stop



This is what the 50 Westbound bus stop looks like.  
Walk towards the bridge above you and cross  
Anderson Street at the lights.



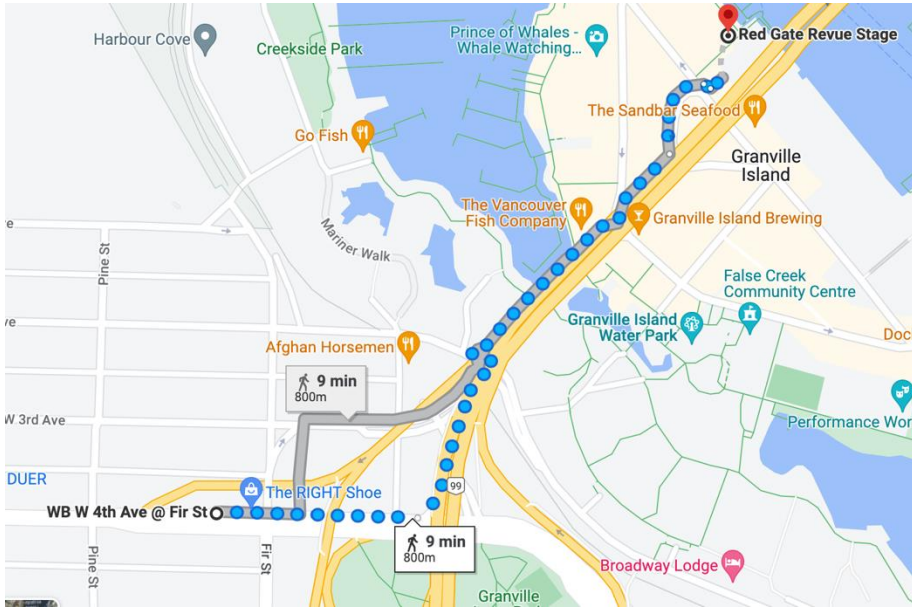
Turn left as soon as you cross the street and  
continue to walk along Anderson Street  
underneath the bridge.

[Skip to slide 23 for remainder of route.](#)

## When Walking from the 4, 7, 14, and 84 Bus Stop

[View map on Google maps](#)

Note: Google maps may provide a different route



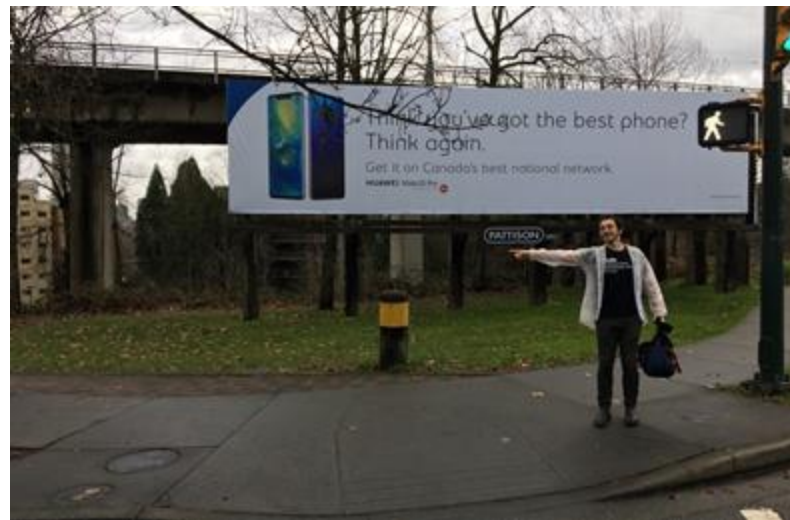
This is what the 4, 7, 14, and 84 Westbound bus stop looks like.

Here is a map from the 4, 7, 14, and 84 bus stops to the theatre.

## When Walking from the 4, 7, 14, and 84 Bus Stop



Turn right when you get off the bus and head along West 4th Ave towards the Granville Bridge above you.



Cross Anderson Street at the lights and turn left.

[Skip to slide 23 for remainder of route.](#)

## When Walking from the 4, 7, 14, and 84 Bus Stop



This is what the 4, 7, 14, and 84 Eastbound bus stop looks like.



Walk away from the Granville bridge towards Fir Street.

## When Walking from the 4, 7, 14, and 84 Bus Stop



Turn right at Fir Street and cross West 4th Avenue at the lights.



Once you cross the street, turn right and walk along 4th Avenue towards the Granville Bridge above you.

## When Walking from the 4, 7, 14, and 84 Bus Stop



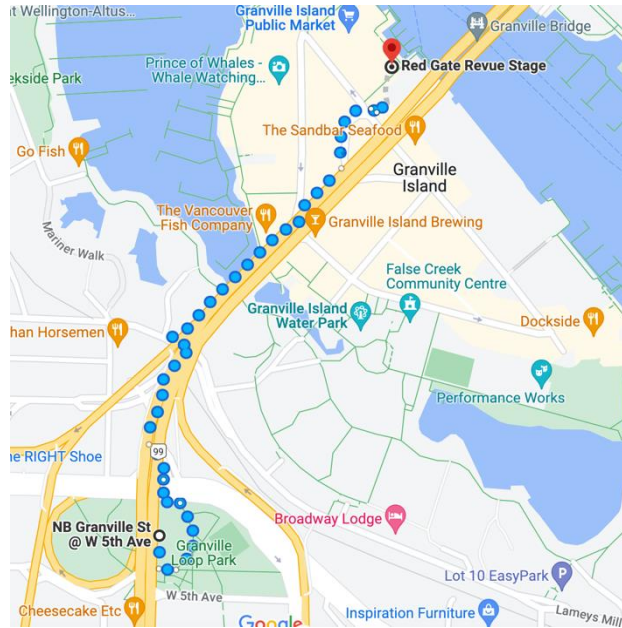
Keep going along west 4th Ave until you  
cross Anderson Street under the bridge.  
Turn left down the path.

[Skip to slide 23 for remainder of route.](#)

## When Walking from the 10 and 16 Bus Stop

[View map on Google maps](#)

Note: Google maps may provide a different route



This is what the 10 and 16 Southbound bus stop looks like.

Here is a map from the 10 and 16 bus stop to the theatre.



## When Walking from the 10 and 16 Bus Stop



Walk away from the Granville Street, down the path towards the park.



After a few feet turn right, into the underground walkway.

## When Walking from the 10 and 16 Bus Stop



After a short while, you will come to a T intersection. Go right.



Just after you come out of the tunnel, and before the stairs, turn left.

## When Walking from the 10 and 16 Bus Stop



Go up those stairs and turn right.



Right away, turn left down the first path in the park.

[Skip to slide 21 for the remaining instructions.](#)

## When Walking from the 10 and 16 Bus Stop



This is what the 10 and 16 Northbound bus stop looks like. Walk back along Granville Street, away from the bridge.



After a few feet, turn left and go down the stairs towards the park.

## When Walking from the 10 and 16 Bus Stop



Right away, turn left down the first path in the park.



Both routes continue together from here on.

Keep going down the path through the park until you reach West 4th Avenue.

## When Walking from the 10 and 16 Bus Stop



Cross West 4th Avenue at the lights.



At the other side, immediately turn right and cross Anderson Street.

## All routes combine here



As soon as you're across the street,  
turn left and go down the path.



Keep following the brick path, which follows  
the path of the bridge above you.  
This will take you all the way onto Granville Island.

## Walking to Revue from Granville Island Entrance



You will see the big GRANVILLE ISLAND sign. At the crosswalk, cross the street.



## Walking to Revue from Granville Island entrance



Keep walking down Anderson street  
under the bridge overpass.  
Cross the street at the crosswalk.



Turn left and walk alongside the Keg.  
Follow the orange arrow.

## Walking to Revue from Granville Island entrance

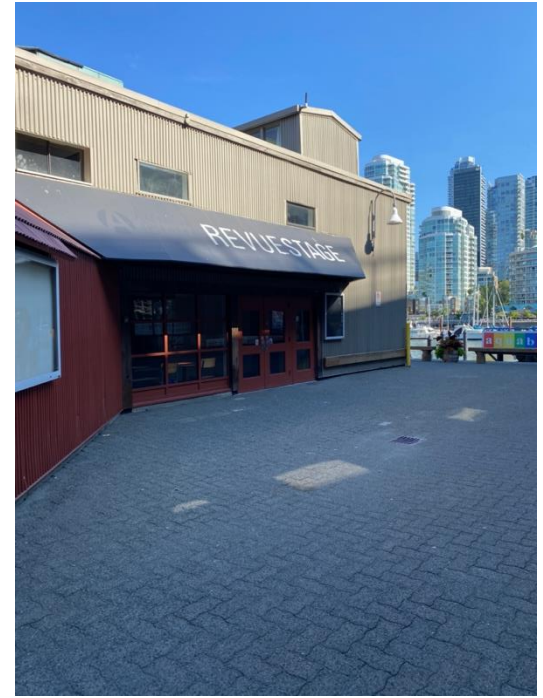
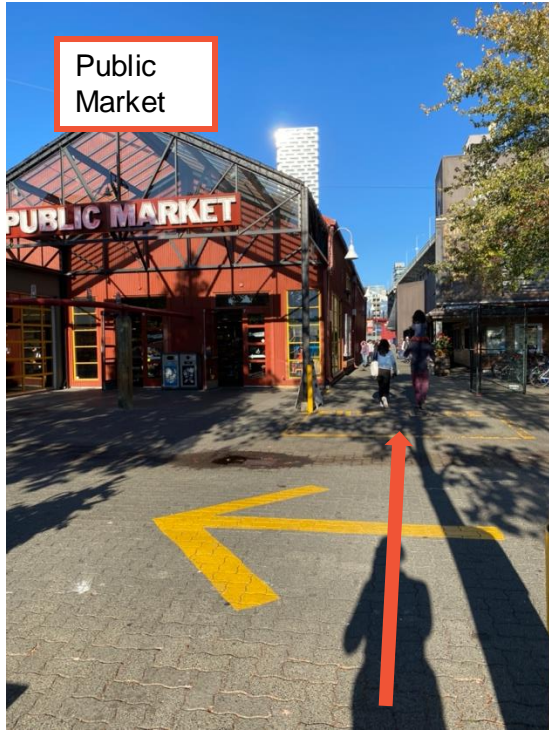


Follow the arrow!



Keep walking straight ahead down Anderson street. You will pass Net Loft (blue building) on your left. The Public Market will be ahead of you.

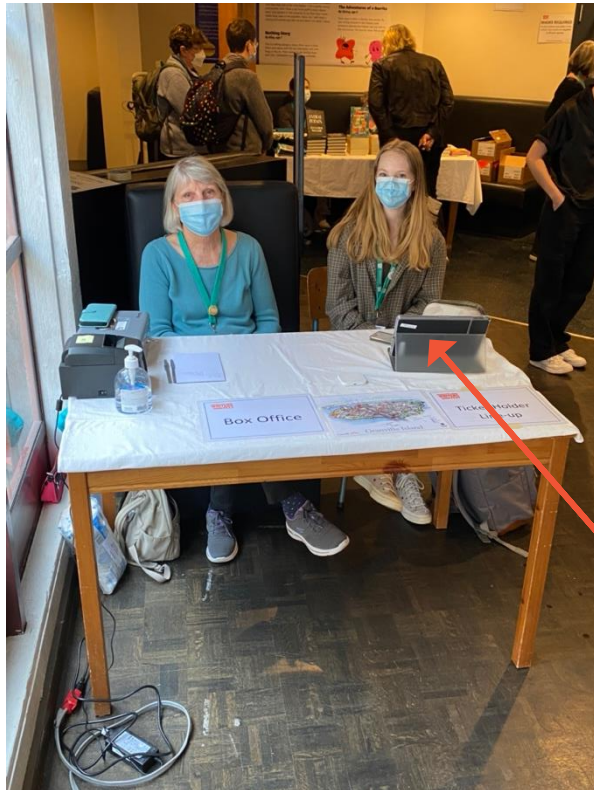
## Walking to Revue from Granville Island entrance



Head towards the Public Market, then walk straight down the pathway to the right of the market building.

A pair of brown doors will be on your left. This is the main entrance.

## Inside the Building



The theatre is through these blue doors

Box office



When you enter the lobby, the theatre will be through a set of blue double doors.

You will be able to purchase or pick up tickets at the box office in the lobby.

# Staff & Volunteers

Our staff & volunteers all wear badges with their name on them.  
Staff wear red badges and volunteers wear yellow badges.



**If you need  
help, ask them!**

While you wait in line, they will ask you if you need a chair to sit on  
or if you need extra time to get settled in the theatre.

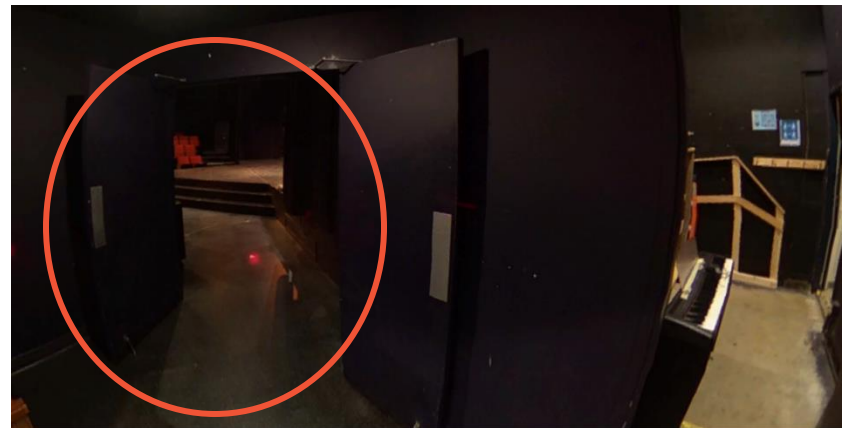
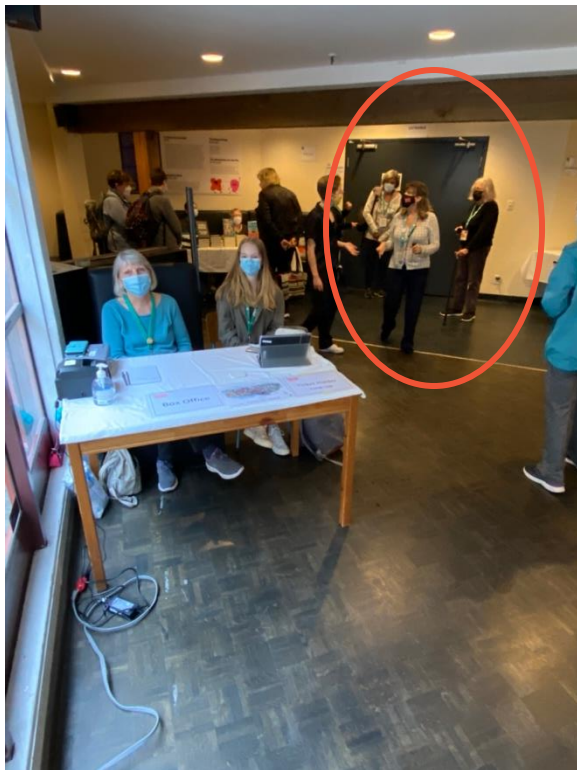
## Drinks & Snacks

This is the bar /concession where sometimes snacks and drinks are sold.  
It is in the lobby.



Items are different for each show.  
You can pay with card or cash.

## Going into the Theatre



The theatre is through two sets of double doors.  
There will be an usher who will take or scan your ticket.

## Inside the Theatre



This is what it looks like to sit in the audience.  
For each show, the stage will look different.



This is what it looks like for the people on the stage.



## Washrooms

- The washrooms are to the right of the main entrance. There is no automatic door button.
- They are gender-neutral with individual stalls and shared sink space.
- The washrooms are shared with the Public Market.
- There are two accessible stalls in this washroom.



This is what the washrooms look like from the Public Market entrance. The Revue entrance is next to the sinks.



This is a picture of one of the accessible stalls.

## Questions?

If you have any questions, please contact:  
[access@writersfest.bc.ca](mailto:access@writersfest.bc.ca)

If you would like to reserve an  
accessible seat or book a  
reduced-price ticket, please contact:  
[boxoffice@writersfest.bc.ca](mailto:boxoffice@writersfest.bc.ca)